

## Oil injection system / 2 cylinder engine

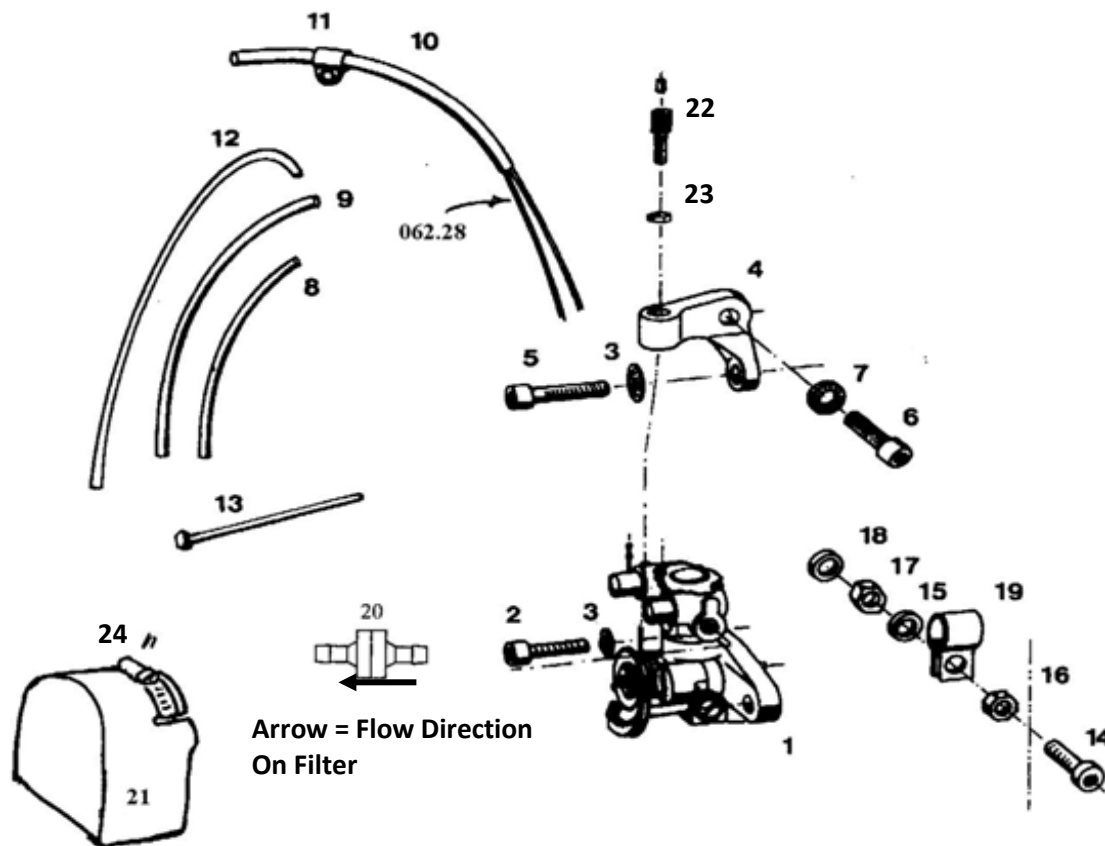


Fig. No	No.	Designation	Hirth Ref. No	Neoteric No.	Notes
1	1	Oil pump	045.9	<b>5426</b>	
2	1	Cylinder screw	D912M5x16		Shorter (port side) oil pump schs .Loctite 243
3	2	Locking washer	053.8/5		Belleville washer under pump mount schs
4	1	Cable adjuster holder	3211 A3		Aluminum bracket to attach cable
5	1	Cylinder screw (Timing Adj. Hardware)	D912 M5X20		Longer (starboard side) oil pump schs.Loctite 243
6	1	Cylinder screw	D912 M6X12	<b>2469</b>	Holds cable adjuster in place.Loctite 243
7	1	Serrated Locking washer	053.8/6	<b>6902</b>	Belleville washer under DIN912M6X12
8	1	Isolating hose	D40621 B5X0,6/140	<b>7128</b>	Short single oil line cover (black)
9	1	Isolating hose	D40621 B8x0,7/330	<b>7129</b>	Long single oil line cover (black)
10	1	Hose	062.28/380	<b>3425</b>	Supply hose front 13" long
11	4	Hose Clip	063.15		Do not use
12	1	Hose	063.28/500	<b>3425</b>	Supply hose rear 16 1/4" long
13	1	Cable tie rap	026.40	<b>2372</b>	Zip tie, do not use
14	1	Cylinder Screw	Din 912 M6x25		Do not use
15	2	Washer	DIN 125 B6,4	<b>6916</b>	Do not use
16	1	Hexagon head screw	DIN 985 M6	<b>5572</b>	Do not use
17	1	Hexagon head screw	DIN 934 M6		Do not use
18	1	Washer	DIN 433 6,4		Do not use
19	1	Hose clip	063.22	<b>6929</b>	Do not use
20	1	Oil Filter		<b>5505</b>	Inline oil filter Arrow = Flow Direction
21	1	Splash Cover		<b>6246</b>	Fiberglass part, Neoteric manufactures
22	1	Adjusting Screw		<b>6105</b>	Oil Injection Cable Adjuster Screw
23	1	Adjusting Screw Nut		<b>6106</b>	Nut to lock adjuster screw
24	1	3" Hose Clamp, SS		<b>2734</b>	Hose clamp for splash co ver

## Oil injection mounting assembly 3203/3202

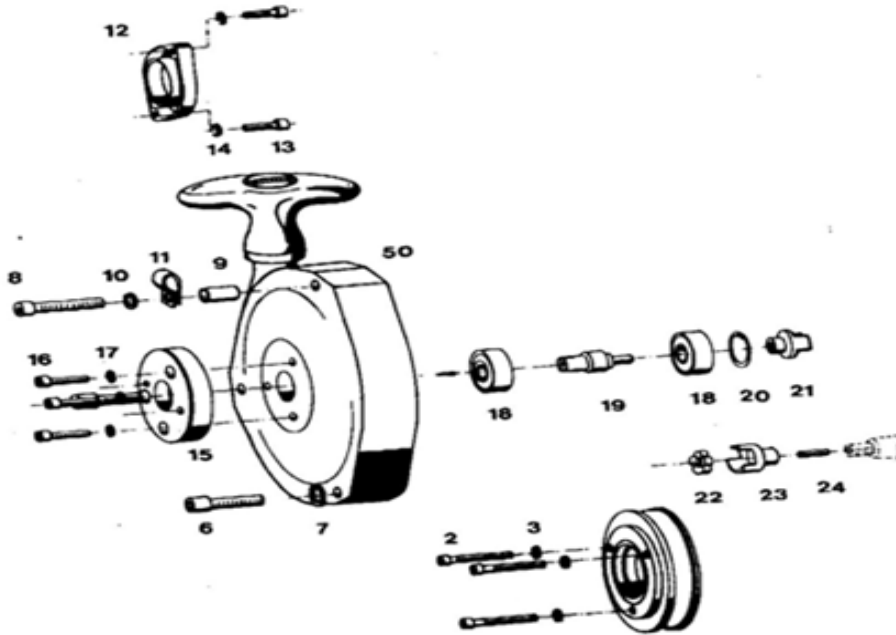
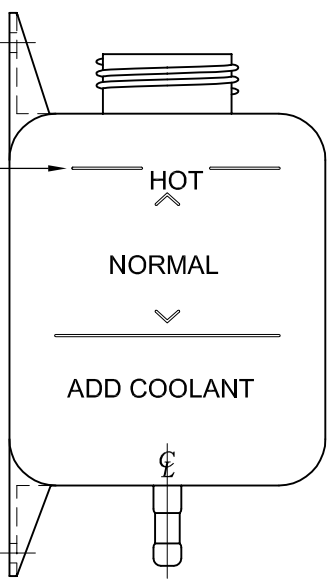


Fig. No	Qty	Designation	Hirth Part No.	Neoteric Part No.	Notes
1	1	Driving Dog with starter	275Y3U	6189	Dog Pulley
2	3	Cylinder Screw	DIN 6912M8X35		Dog Pulley hardware, SCHS Md=23-28Nm
3	3	Tab washer	053.8/8		Belleville washer under DIN6912M8X35
50	1	Recoil	275AF1U	5471	Pull Start
6	2	Cylinder screw	DIN 912 M6X35	6911	Pull Start Hardware SCHS Md=9,6...11 Nm
7	2	Spring Ring	DIN7980 6	6940	Pull Start Hardware, Belleville washer under DIN912M6X35
8	1	Cylinder screw	DIN 912 M6X50	2479	Pull Start Hardware SCHS (Only applies to 5471 pull start long screw)Md=9,6...11 Nm
9	1	Spacer pipe	264 H4	6935	Pull Start Hardware
10	1	Washer	DIN 125 B6,4	6916	
11	1	Pipe clamp with rubber	063.24	6697	Small #8 clamp
12	1	Solenoid starter	195 A1		
13	2	Cylinder screw	DIN 912 M8X30	2348	Starter SCHS bolt
14	2	Spring ring	DIN 127 B8		Belleville washer under DIN912M8X30
15	1	Mounting Plate	3211 A4		Round plate on front 5471
16	3	Cylinder screw	DIN 912 M5X16		SCHS holds on round plate 3211A4
17	3	Serrated tab washer	053.8/5		Belleville washer under DIN912M5X16
18	2	Deep groove ball bearing	DIN 625 6200 2RS/C3	6887	Located inside 5471
19	1	Shaft	3211 A5		Located inside 5471
20	1	Locking ring	DIN 472 30X1,2		Located inside 5471
21	1	Coupling right	3211 A8		Located inside 5471
22	1	Coupling element	040.4/2		Rubber coupling element. Loctite 243
23	1	Coupling left	3211 A7		Aluminum coupler engine side. Loctite 243 –reverse threaded
24	1	Threaded pin	DIN 913 M6X20 LH		Reverse thread set screw that attaches 3122A7 to the crankshaft. Loctite 243-reverse threaded

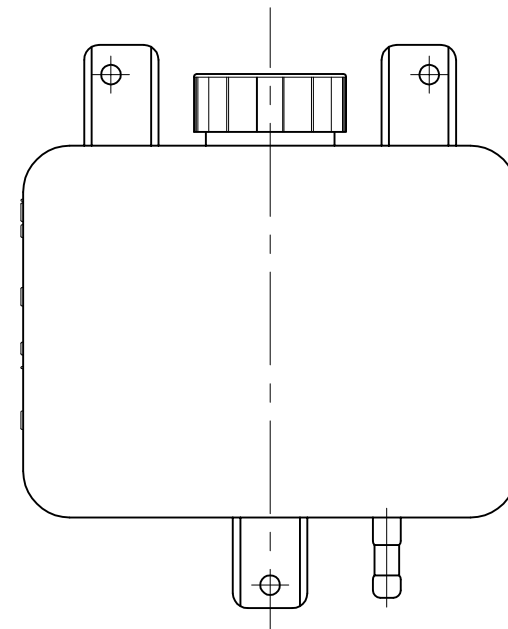
BILL OF MATERIAL	
PART #	DESCRIPTION
5911	OIL RESERVOIR TANK



UPPER OIL LEVEL = 54 FL-OZ  
= 3.38 PINTS = [1597ml]




\*NOTE:  
DISREGARD TANK MARKINGS  
EXCEPT FOR UPPER LEVEL



NOTES:

1. TANK CAPACITY: 64 FL-OZ = 4 PINTS = [1893ml] AT TOP OF CAP.
2. 1.00 [25.4] DROP IN OIL LEVEL = 12.8 FL-OZ = 0.8 PINTS = [379ml]
3. CONSUMING 5 GALLONS OF FUEL @40:1 FUEL/OIL RATIO WILL PRODUCE 1.25 [31.75] DROP IN OIL LEVEL

ALL DIMENSIONS IN In AND [mm] TOLERANCE UNLESS OTHERWISE SPECIFIED:				
		SIG. NO.	REVISION	DATE
		 <b>Neoteric Hovercraft Inc.</b> 1649 TIPPECANOE STREET TERRE HAUTE, INDIANA, U.S.A. 47807-2394 TELEPHONE (812) 234-1120 FAX (812) 234-3217		
# REQUIRED:	CHECKED:	DRAWN:	NAME:	
SCALE:		CJ POEHLIN	OIL RESERVOIR TANK	
PAGE:	WEIGHT:	DATE:	NUMBER:	REV.
1 OF 1	7.2 oz	11 NOV, 2015	16646	2